

GrayFoxHarms.com

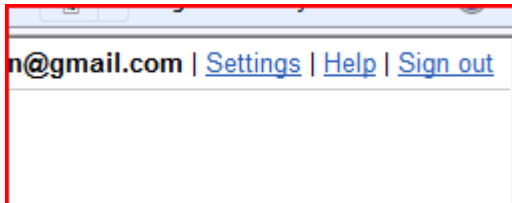
Steps and files needed to complete cell phone notification:



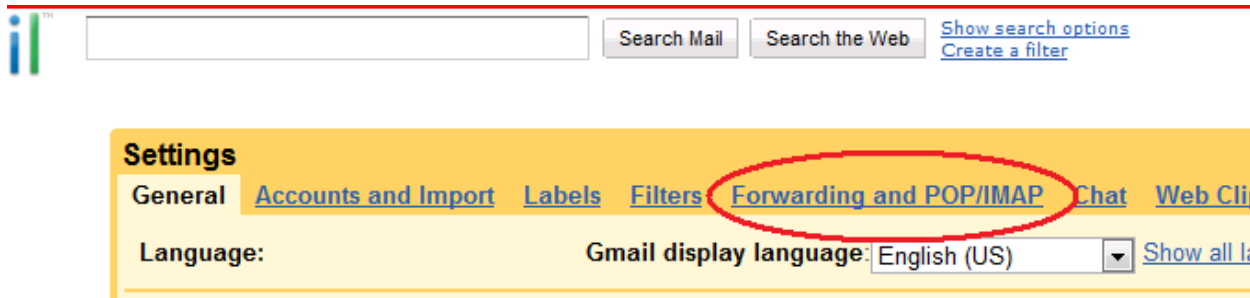
- www.yawcam.com – Yawcam software used to detect motion on electronic clock. Can be directly accessed at <http://www.yawcam.com/get.php>
- Gmail email account – can be accessed by visiting www.gmail.com.

First lets change a few settings in Gmail to allow the yawcam software to communicate with their free service.

- Changing the settings in gmail to allow a third party application to send email from their server. First click on the settings option in the upper right hand corner of the gmail page



- Then click on the forwarding and POP/IMAP icon



- Finally enable pop for all mail

1. Status: POP is enabled for all mail that has arrived since 9/22/08

Enable POP for **all mail** (even mail that's already been downloaded)

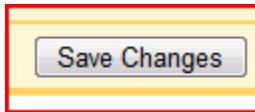
Enable POP for **mail that arrives from now on**

Disable POP

2. When messages are accessed with POP

3. Configure your email client (e.g. Outlook, Eudora, Netscape Mail)
[Configuration instructions](#)

- Don't forget to Save Changes



- *Gmail is now configured! Note: If you know your ISP's information you can use your own email provider and settings if you like.*

Make sure you meet these hardware requirements

- Computer, internet access, and cell phone capable of receiving picture messages. (Doug Harms used a dell laptop, us cellular wireless aircard for internet, and a Motorola cell phone)
- An inexpensive webcam (Logitech 300 is the one we used) (it's best to pick one with a manual focus ring. You will be setting this device up approximately 4 inches from your electronic clock.)

"logitech webcam c300"

Select Results from All Departments

- 

Logitech C300 Webcam - Black (960-000347) by Logitech
[Buy new:](#) ~~\$49.99~~ **\$44.99**
[2 new](#) from \$44.99
 In Stock
 ★★★★★ (1)
Electronics: [See all 4 items](#)
- 

Logitech Webcam C500 - Silver [Amazon Frustration-Free Packaging] by Logitech
[Buy new:](#) ~~\$49.99~~ **\$42.49**
[2 new](#) from \$35.99
 Get it by **Monday, Mar. 29** if you order in the next **21 hours** and choose one-day shipping.
 Eligible for **FREE** Super Saver Shipping.
 ★★★★★ (50)
Electronics: [See all 4 items](#)
- 

Logitech C250 Webcam (Grey) by Logitech
[Buy new:](#) ~~\$39.99~~ **\$34.94**
[35 new](#) from \$19.95 [2 used](#) from \$17.99
 Get it by **Monday, Mar. 29** if you order in the next **21 hours** and choose one-day shipping.
 Eligible for **FREE** Super Saver Shipping.
 ★★★★★ (10)
Electronics: [See all 4 items](#)

Installation instructions: Software

- Install the Yawcam software onto your computer and plug in your webcam device. It MAY BE necessary to use the installation CD that came with the Logitech webcam in order for your computer to recognize the webcam. If your computer recognizes it without the Logitech software do not install the software from Logitech (Logitech software may interfere with the ability of Yawcam's communication with the webcam device).

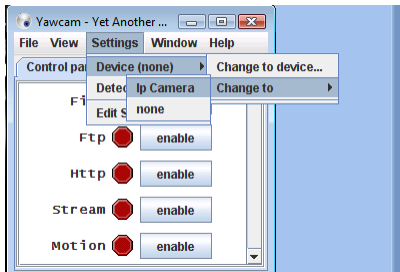
Installation instructions: Hardware

- Set the webcam approximately 3-6 inches from the electronic clock so you can see the preview screen on your computers monitor. (note – this webcam has been mounted to a box to prevent it from shifting). The top of the box is removable and the unikon sits in a base. There is a wooden lid that closes down over the unit to prevent light and motion from entering. You will notice this is very important, if you leave the clock on for more than 1 hour as when the sun sets or the light changes. The camera is very sensitive and will start taking pictures of the clock. Having a ceiling fan on will flicker light across the face of the unikon and will activate the picture message.

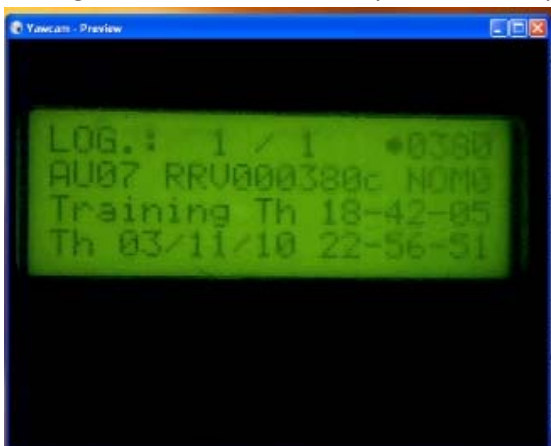


Software settings

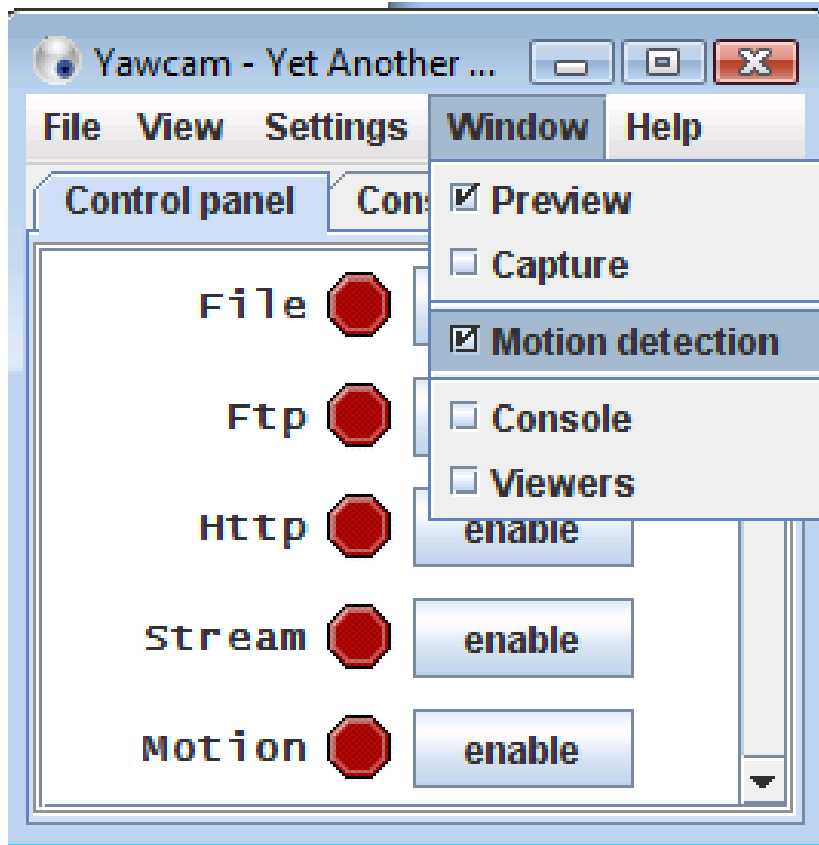
- Open the yawcam software and click on settings > device > change to > and select your webcam.



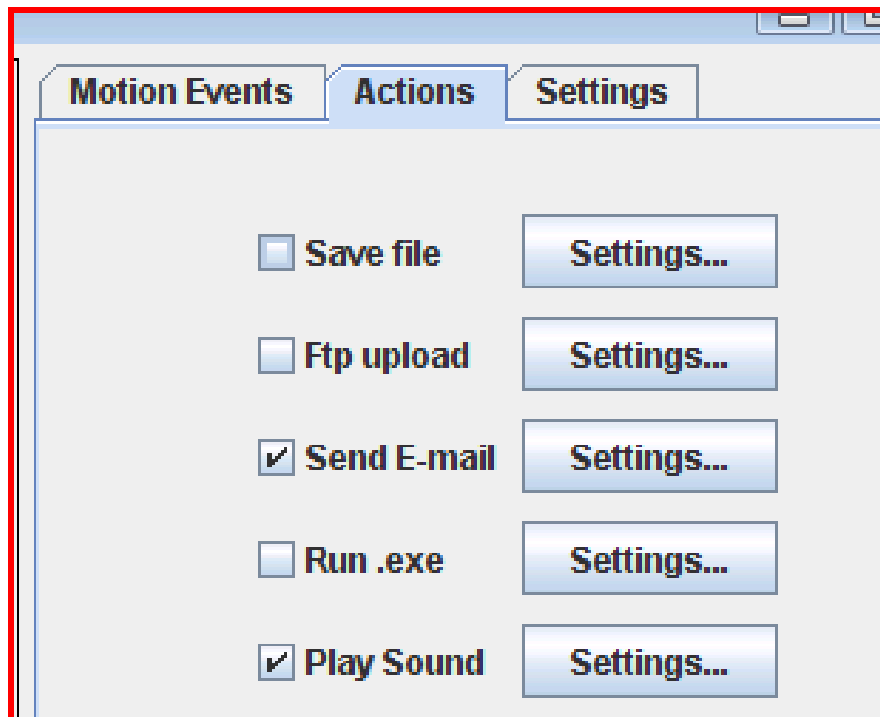
- A preview screen should show the image coming from the webcam. View the unikon screen using the yawcam software. You can see the screen shows bird AU07RRV000380 has clocked on a training log on 03/11/10 at 18-42-05. (note: in this picture, the only light hitting the webcam is coming from the unikon screen (the camera and clock are in a box)). Also note that the camera is so close to the screen, it completely fills the picture. Setting the camera farther away will result in poor picture quality and a screen that is difficult to read.



- Now all you have to do is change the setting in the yawcam software to have this digital picture sent to your cell phone when a bird comes home. Open yawcam and go to window the check the motion detection box.



- Select the action tab and click on settings. Make sure the send email box is checked and if you like, the “play sound” may be checked. The unikon makes a sound when a bird clocks and having the computer make a sound when it takes the picture helps to verify that a bird has clocked in and an image message is expected to be sent.



- Under the setting tab motions detection > settings, make sure you have the following fields entered for your gmail account (look at the settings closely ie: server port etc).
 - **To:** should be your cell phone number with @sms.uscc.net (or provider equivalent)
 - **From:** your gmail account email address
 - **Subject:** bird clock (date optional)
 - **Message:** Training or Race Station name (date optional)
 - Make sure the attach image box is checked or you'll get an email with no image.
 - **SMTP:** is smtp.gmail.com
 - **PORT** is 587
 - Check boxes SSL and password required
 - Set the JPEG quality to 80 percent or higher (the higher the setting the larger the file – you'll get better image quality on the phone with a higher setting)
 - Under the image options, do not check add overlay box, also leave image array box empty. Activate the flood control and set frequency to 1 second. This ensures, that you will get a picture message each second as the birds clock in.
 - Make sure you click OK to save the settings

Email settings

E-mail

To: YOUR @mms.uscc.net
 From: YOURS@gmail.com
 Subject: bird clocked

Message:
 Date and training or race station

Attach Image

Smtp server

SMTP Server: smtp.gmail.com Port: 587

Use encrypted connection. (SSL)

Password required

Username: YOURS
 Password: ●●●●●●●●

Image options

JPEG Quality: 80 %

Add Overlay

Image array

Activate

Attach 5 images taken with interval of 1000 ms.

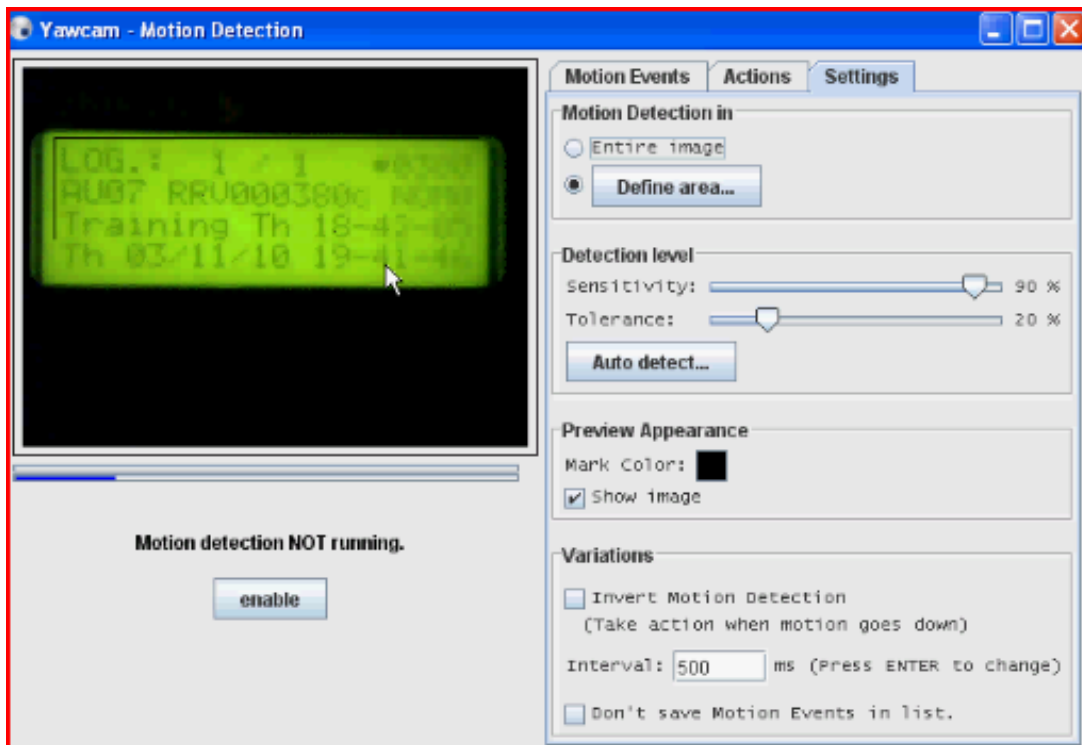
Flood control

Activate

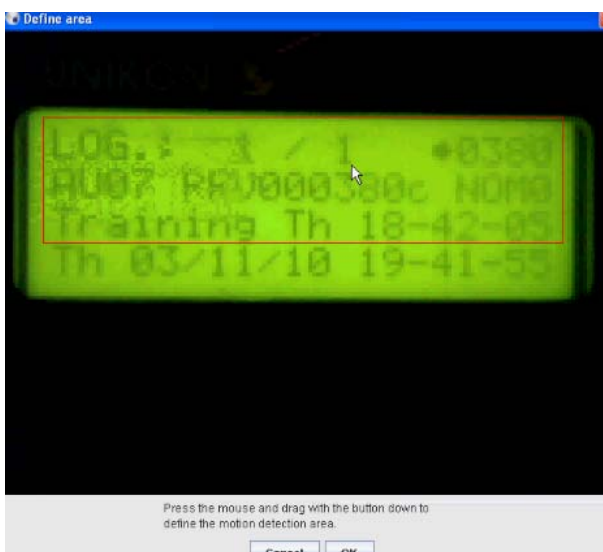
Max 1 e-mail during 1 seconds.

Cancel OK

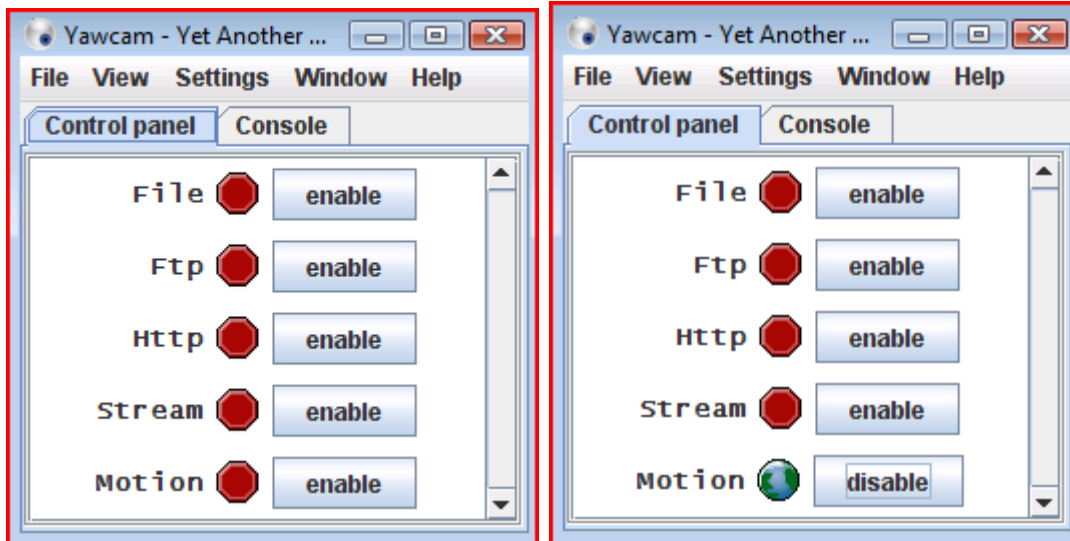
- Click on the settings tab (still under the motion detection settings just next to the actions tab) and make sure the following settings are in place. Under motion detection, check define area dot. The only items to be monitored are the top three lines of the unikon clock screen. Under detection level, set sensitivity to 90 percent and tolerance to 20 percent. The sensitivity is set to 90 because the webcam is picking up on the subtle changes of the unikon screen when a bird clocks. If the sensitivity is set too low the yawcam software won't activate the email and picture. Under preview appearance, you can select your desired color for the defined area. Leave the variations boxes unchecked.



- Click on the define area box and select this portion of the unikon clock screen as shown in the picture below. It is the only part that changes when a bird clocks. Once you have this part set, assuming you do not move the clock or camera, these settings should remain constant. Make sure you do not include the lower line portion (the current time) because the software will take a picture of the screen every time the time changes. Note: here we have the selection in RED around the LOG, Bird, and Training lines. This tells the yawcam software to email a picture when items in this section change and tells it to ignore the other items not included in the red box.



- To activate this system on a routing basis: turn on computer, make sure that you're connected to the internet, activate yawcam. After the main screen opens, **Click:** Settings, detect web cam, ip camera, usb device (or your selected camera), and click ok (this will enable your camera)
- Then click "enable" button to the right of motion.



- This will take your previously saved settings and start the process of snapping a picture of the electronic clock screen when the screen changes as a bird clocks. The system will then play a sound and send an email with a picture message to your cell phone.
- Now that you have the settings in place, test the unit by having a bird clock and see if the computer takes a picture of the screen of the clock and then sends that same picture to your cell phone.
- That's it for the setup! Please contact us at www.GrayFoxHarms.com for purchasing excellent breeding stock or racing kits of youngsters.